

**LEGO** SYSTEM™

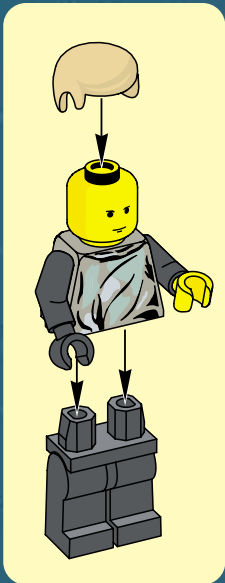
7128



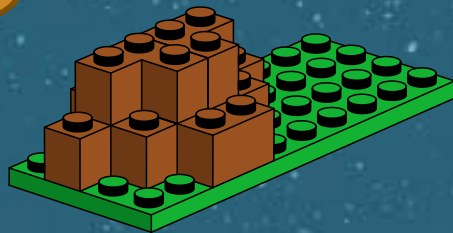
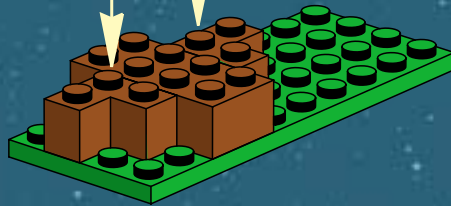
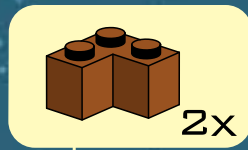
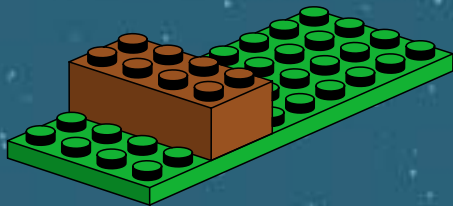
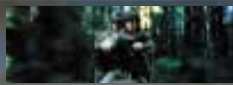
**STAR  
WARS**™



**SPEEDER BIKES**™

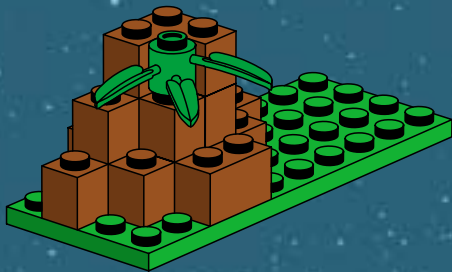


LUKE SKYWALKER

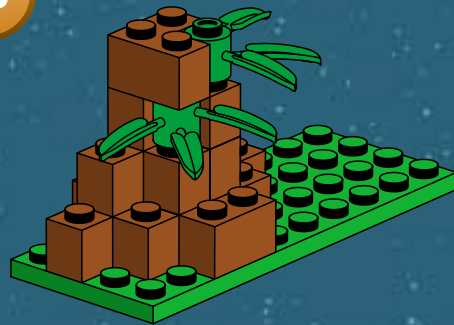




4

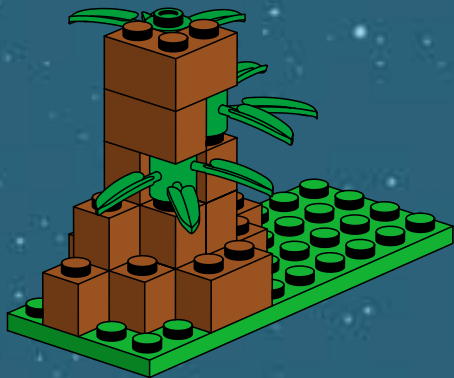


5

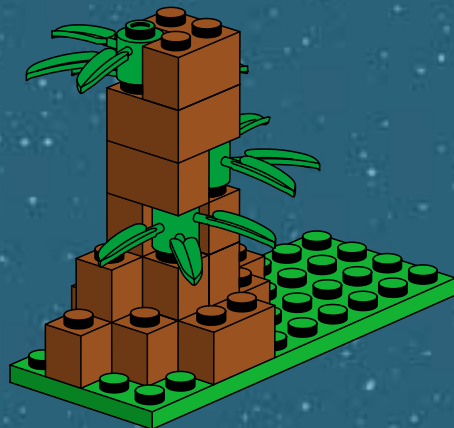


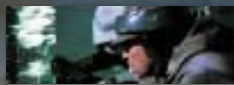


6

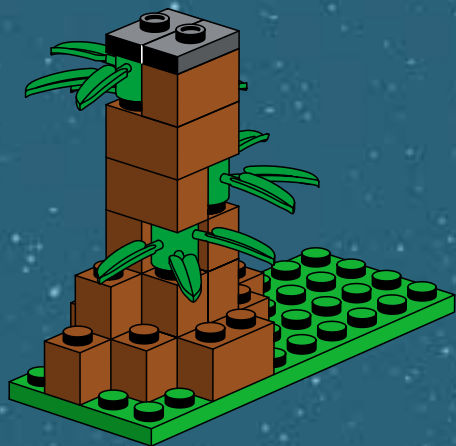


7

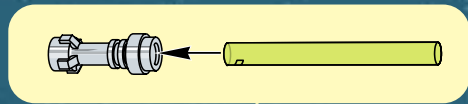


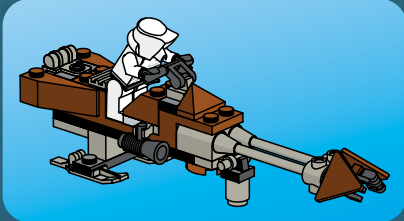
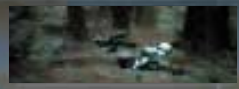


8



9





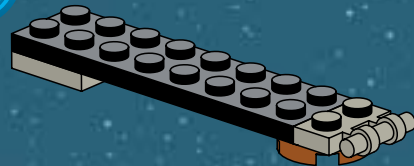
1



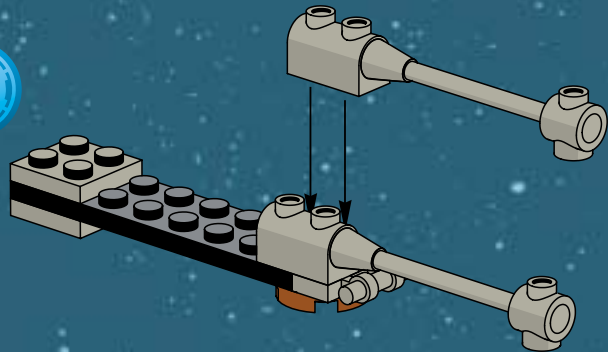
2



3

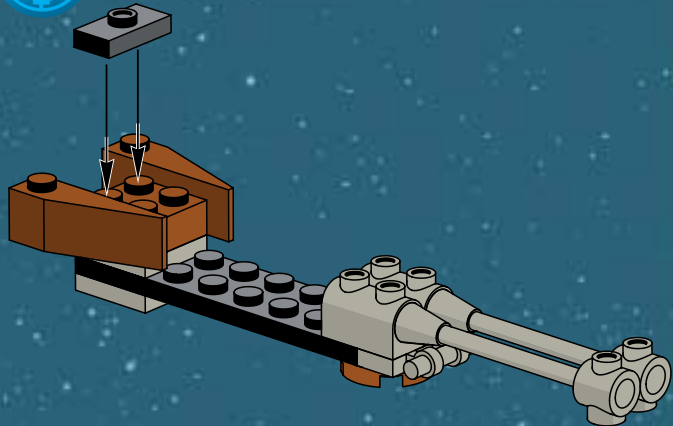


4

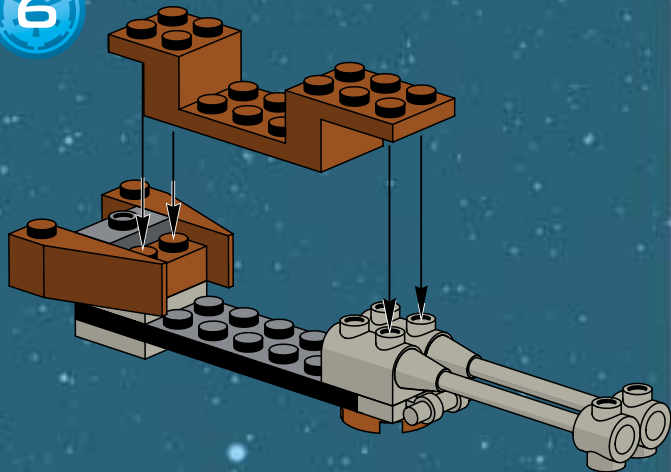




5



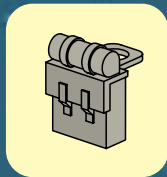
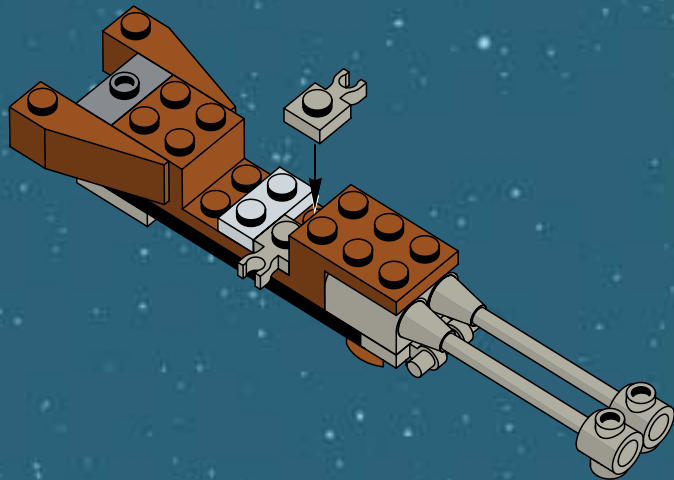
6



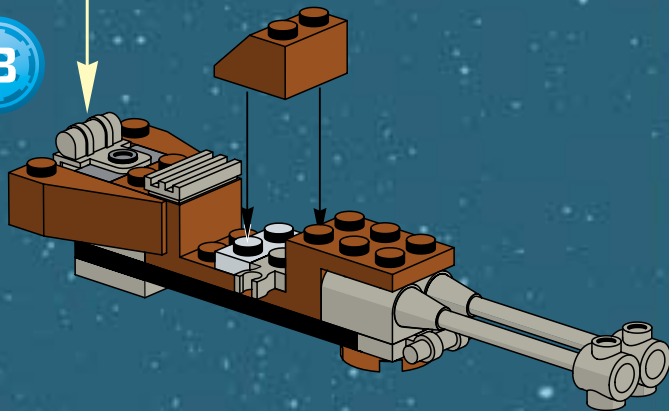




7

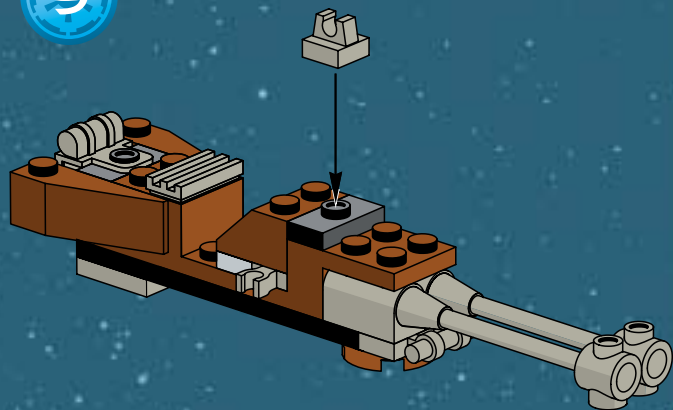


8

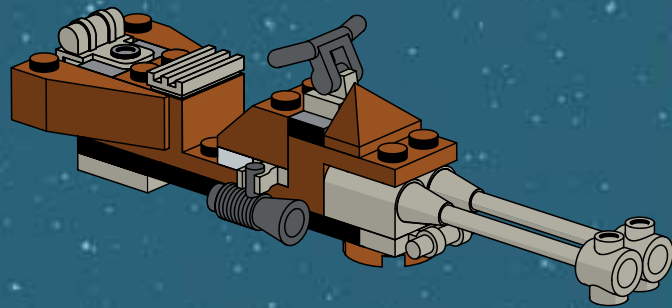


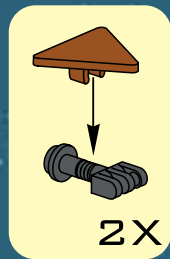
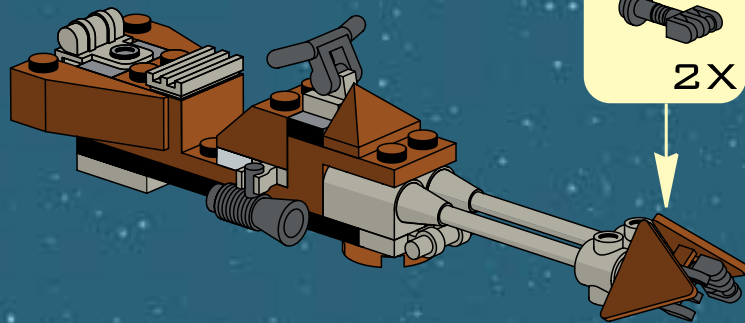


9



10

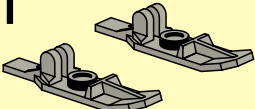




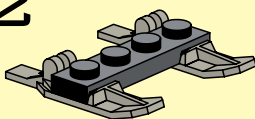


12

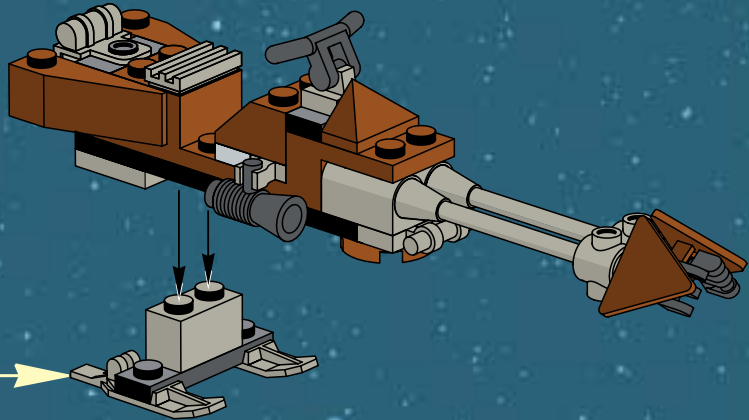
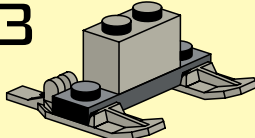
1

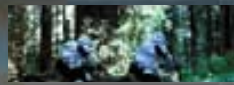


2

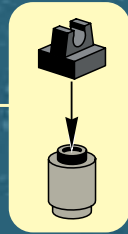
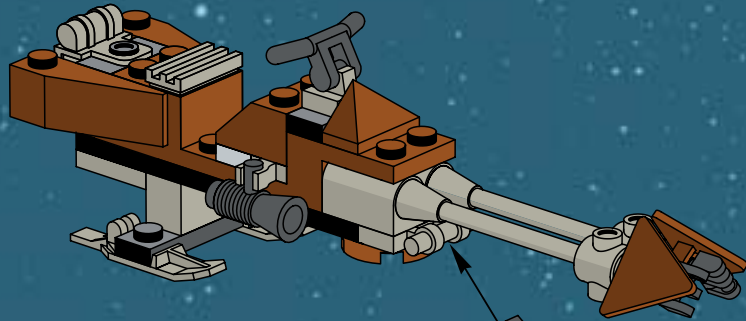


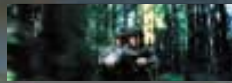
3



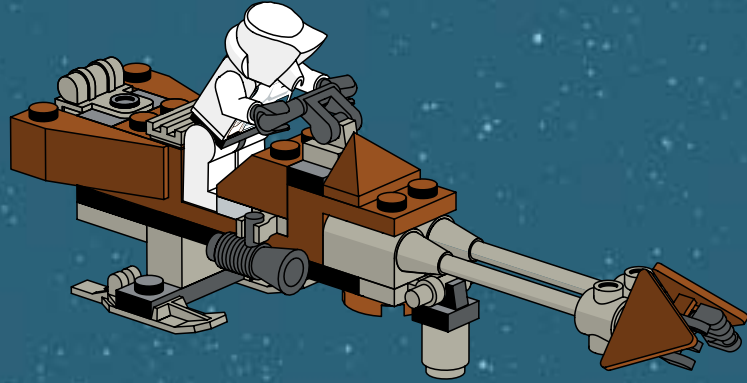


13

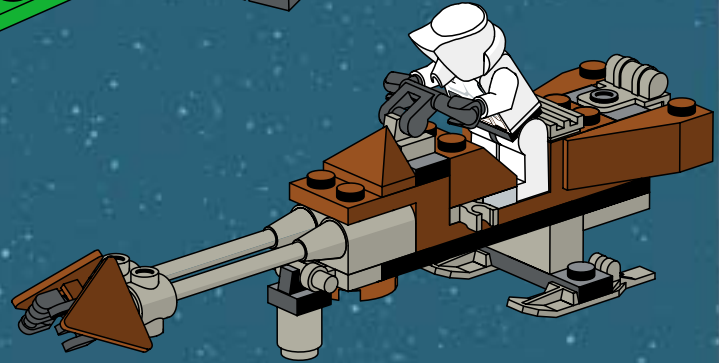
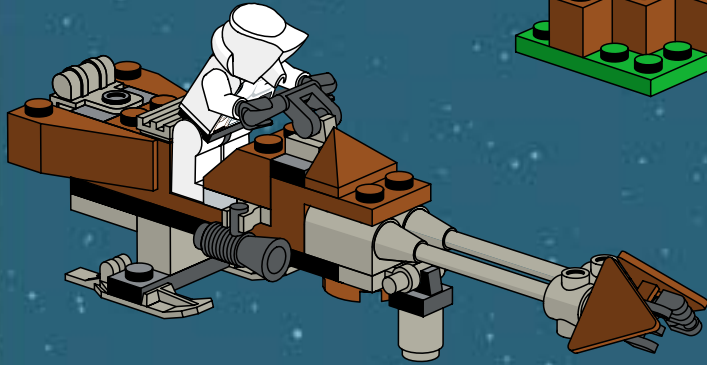




14



2X



1128  
1999

www.LEGO.com

©1999 LEGO Group.  
©The LEGO Group. The LEGO SYSTEM logo and the minifigure are trademarks of the LEGO Group.

© Lucasfilm Ltd. & TM. All rights reserved.  
All Star Wars elements are property of  
Lucasfilm Ltd. and/or Lucas Licensing Ltd. Official Star Wars Web Site  
<http://www.starwars.com>

